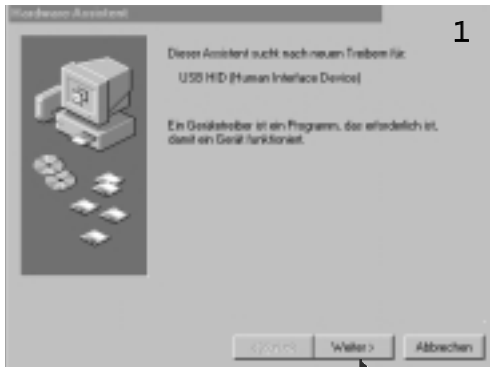


Installation under Windows® 98. USB Anschlußstecker von FireJet mit USB-Schnittstelle am PC verbinden.  
 Installation under Windows® 98. USB connecting plug to connect FireJet with the USB port of the PC.  
 Installation sous Windows® 98. Relier le connecteur USB de la console FireJet avec le port USB du PC.  
 Instalación bajo Windows® 98. Unir al PC el conector USB del FireJet con puerto USB.  
 Installatie onder Windows® 98. USB-aansluitstecker van FireJet met USB-poort van de PC verbinden.  
 Installation under Windows® 98. Anslut USB-anslutningshanen från FireJet till datorns USB-port.  
 Installation under Windows® 98. USB tilslutningsstikket fra FireJet forbindes med USB-porten på PC'en.  
 Installation under Windows® 98. USB tilslutningsstikket fra FireJet forbindes med USB-porten på PC'en.  
 Installálás Windows® 98 alatt: A FireJet USB csatlakozóját a PC USB portjához csatlakoztatni.  
 Instalace pod Windows® 98. USB konecovku z FireJet připojit s USB portem na PC.

1  
L  
^  
:  
.  
k  
j J



1



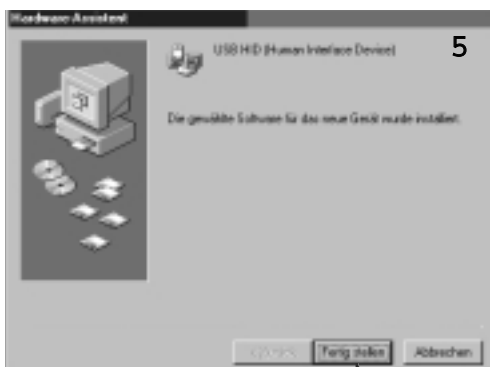
2



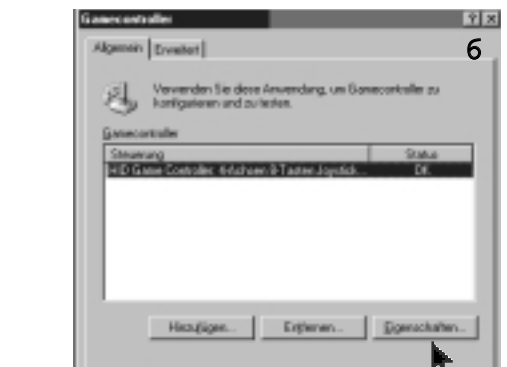
3



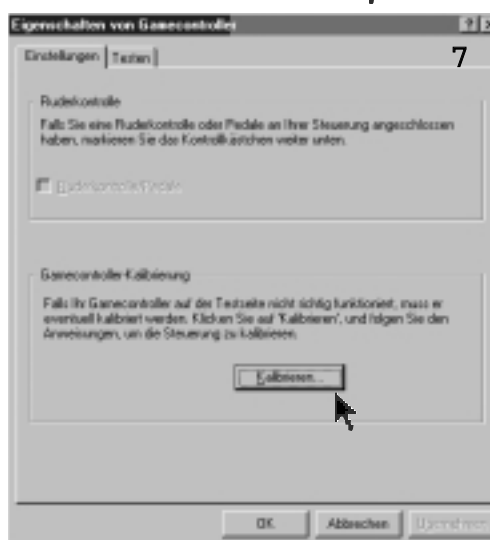
4



5



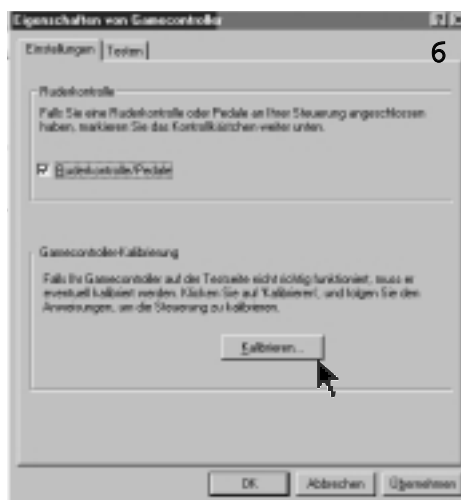
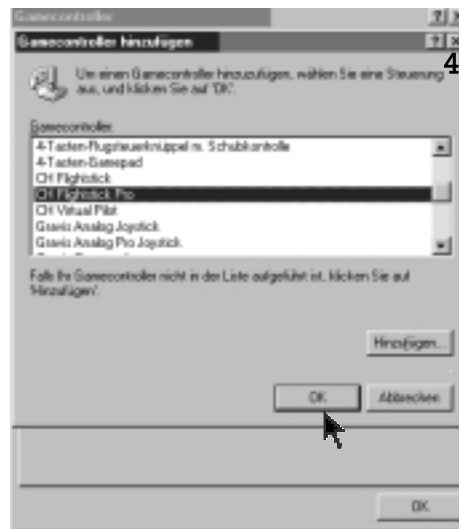
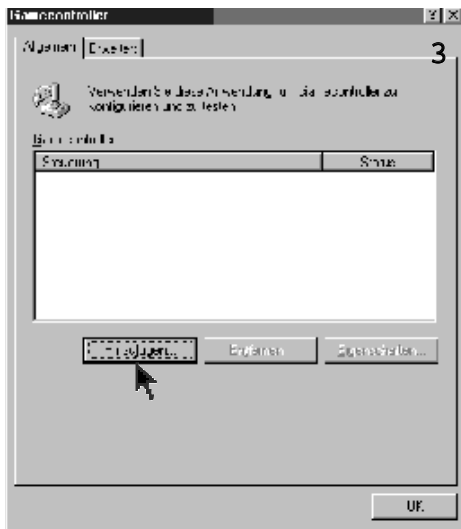
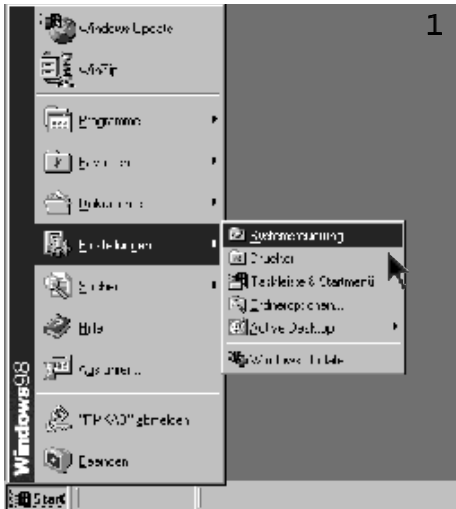
6



7

Kalibrieren 1  
 Calibrate L  
 Calibrer ^  
 Calibrar  
 Kalibreren :  
 Kalibrera  
 Kalibrera  
 Kalibrálás k  
 Kalibrovat j J  
 Calibrare .

- Installation under Windows® 95/98. 15-poliger Anschlußstecker von FireJet mit Gameport-Schnittstelle am PC verbinden. 1
- Installation under Windows® 95/98. Connect FireJet 15-pole connector to the PC's Gameport interface. L
- Installation sous Windows® 95/98. Raccorder le connecteur 15 points de FireJet au PC par l'interface du port jeux. /
- Instalación bajo Windows® 95/98. Unir el conector de 15 polos del FireJet al PC con la interfaz del gameport. :
- Installatie onder Windows® 95/98. 15-pol. aansluitstecker van FireJet met gamepoort-interface van de PC verbinden. :
- Installation under Windows® 95/98. 15-polet tilslutningsstik fra FireJet for tilslutning til Gameport-Interface. .
- Installation under Windows® 95/98. Anslut den 15-poliga anslutningsstickproppen från FireJet till gameport-gränsnittet på pc-n. .
- Installazione sotto Windows® 95/98. Collegare la spina 15 poli del FireJet all'interfaccia gameport del PC. k
- Installálás Windows® 95/98 alatt: A FireJet 15 pólusú csatlakozóját a PC Game-portjához csatlakoztatni. j J
- Instalace pod Windows® 95/98. 15 - pólovou koncovkou od Fire Jet propojit naGame port rozhraní. .



- Kalibrieren 1
- Calibrate L
- Calibrer /
- Calibrar :
- Kalibreren :
- Kalibrera .
- Kalibrere .
- Kalibrálás k
- Kalibrovat j J
- Calibrare .